

CAPITAL



© Hannes Van Rijn

M/T ATLANTAS

BUILT: 2010

CLASS: LRS

FLAG: LIBERIA



BUILDER: Daewoo Shipbuilding & Marine Engineering Co., Ltd. - S. Korea

VESSEL PARTICULARS

Type of vessel:	CRUDE OIL TANKER, A1, ESP, E0 PLUS1, NAUT-OC, SPM, VCS-2,TMON, BIS, BWM-E
Summer deadweight:	321,300.3 MT
Summer draft:	22.524 m
Summer freeboard:	4.552 m
GRT / NRT:	162,198/112,192
LOA:	333 m
Beam:	60.00 m
Depth:	30.5 m
Keel to mast:	65.70 m



CARGO ARRANGEMENTS

Cargo / slop tanks:	15 / 2
Cargo capacity (98% ex slop tanks):	341,526.6 m ³
Slop tank capacity (98%):	9,799.2 m ³
Cargo tank coating:	Epoxy bottom and above up to 0.5m
Heating arrangement:	Aluminized - brass heating coils in slops
SBT / IGS / COW:	Yes
Number of manifolds on each side:	3 x 400 mm
Distance bow to mid-point manifold:	157.2 m
Distance main deck to center manifold:	2,100 mm
Distance manifolds to ship's rail:	4,600 mm
Natural segregation with double valves:	3
Cranes / SWL:	2 x 20 T



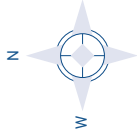
CARGO PUMPS

Cargo pump type:	Centrifugal
Number of cargo pumps:	3
Capacity of cargo pumps:	3 x 5,000 m ³ / h

PROPULSION

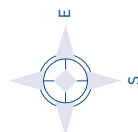
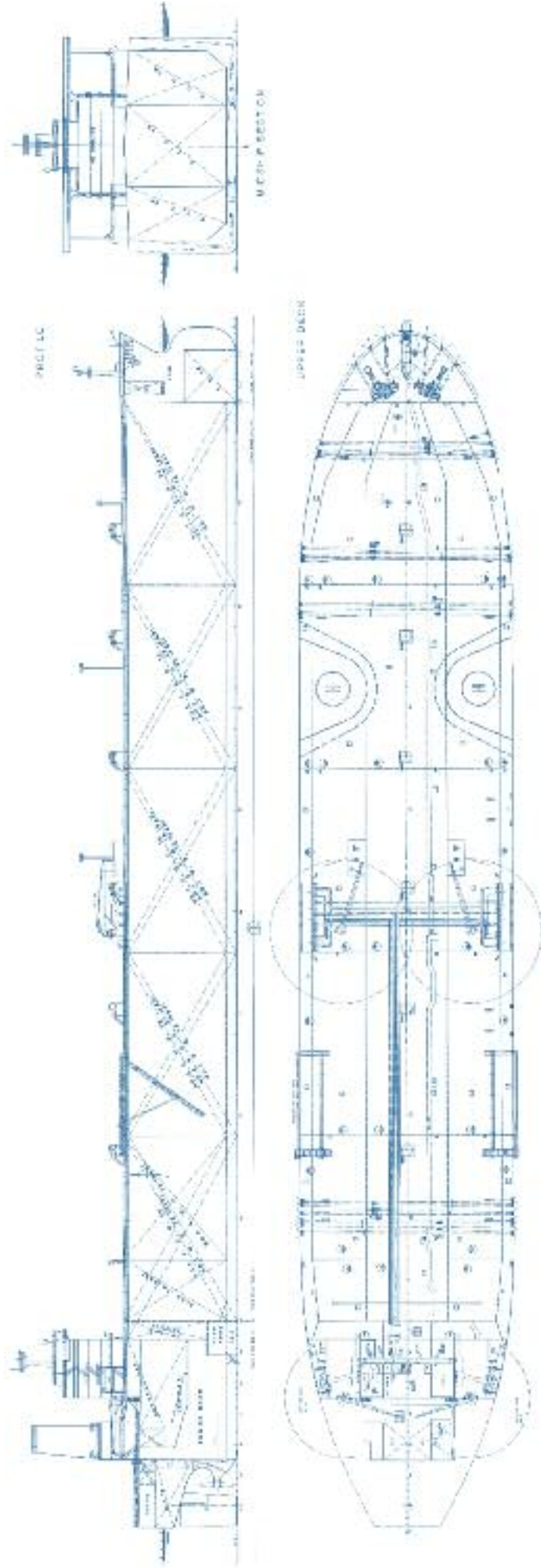
Main engine:	SULZER 7RT-FLEX84T-D MC 76 RPM / 40005 PS
Propeller type:	Fixed pitch
Generators:	3 x WARTSILA 1280 kW
Bow thruster:	N/A

ALL DETAILS ABOUT



CAPITAL

SHIP MANAGEMENT CORP



M/T ATLANTAS

3, Iassonos St., Piraeus 185 37, GREECE
Tel: +30 210 4584900, Fax: +30 210 4285679
e-mail: info@capitalship.gr - www.capitalship.gr