

# CAPITAL



## AMPHION AMYNTAS ANDRONIKOS AGITOS

**BUILT:** 2019

**CLASS:** ABS

**FLAG:** LIBERIA



**BUILDER:** Samsung Heavy Industries Co., Geoje Shipyard, Korea

### VESSEL PARTICULARS

Type of vessel:	A1, Oil Carrier, ESP, AMS, ACCU, CSR, CPS, POT,RRDA, IHM, BWE, SPMA, UWILD, CRC(I), TCM,ENVIRO, VEC, BWT, PORT, NBL
Summer deadweight:	320,784 MTS
Summer draft:	22.825 m
Summer freeboard:	5.222 m
GRT / NRT:	161,983 / 110,141
LOA:	332.98 m
Beam:	60 m
Depth:	30.50 m
Keel to mast:	63.50 m

### CARGO ARRANGEMENTS

Cargo / slop tanks:	15 / 2
Cargo capacity (98% ex slop tanks):	347,089.0 m <sup>3</sup>
Slop tank capacity (98%):	10,889.00 m <sup>3</sup>
Cargo tank coating:	Epoxy BOTTOM AND ABOVE UP TO 1 M
Heating arrangement:	Aluminized - brass heating coils in slops
Number of manifolds on each side:	3 x 500 mm
Distance bow to mid-point manifold:	163.20 Metres
Distance main deck to center manifold:	2,100 mm
Distance manifolds to ship's rail:	4,600 mm
Grades:	3
Cranes/SWL:	2 x 20 T

### CARGO PUMPS

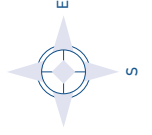
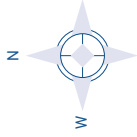
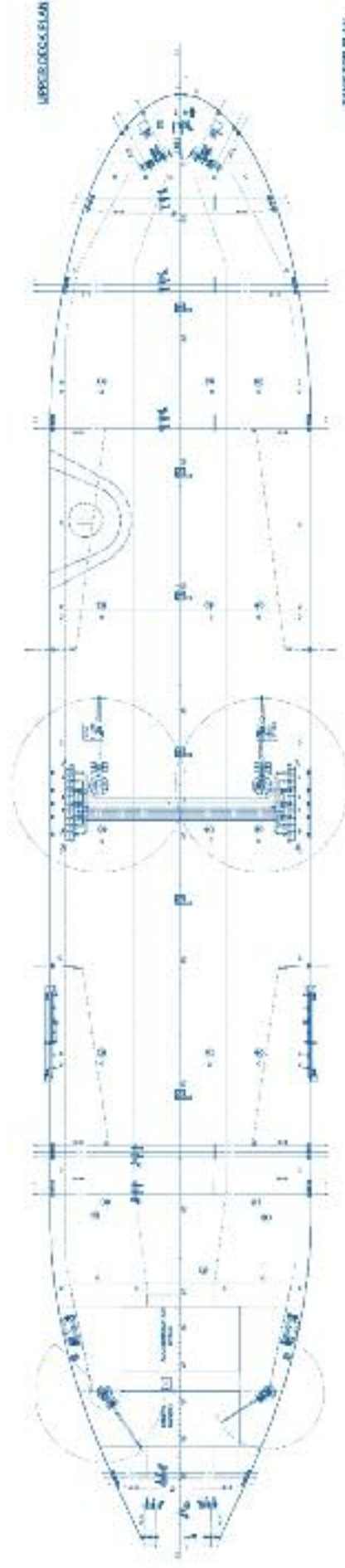
Cargo pump(s):	Centrifugal
Number of cargo pumps:	3
Capacity of cargo pumps:	5,000 m <sup>3</sup> /hr

### PROPULSION

Main engine:	DOOSAN MAN B&W 7G80ME-C 9.5 TIER III 26890 Kw @ 72 RPM
Diesel generators:	3 X HYUNDAI - HIMSEN 7H21/32 900 RPM/1540KW ALL DETAILS ABOUT

# CAPITAL

SHIP MANAGEMENT CORP



**AMPHION AMYNTAS ANDRONIKOS AGITOS**

3, Iassonos St., Piraeus 185 37, GREECE  
Tel: +30 210 4584900, Fax: +30 210 4285679  
e-mail: [info@capitalship.gr](mailto:info@capitalship.gr) - [www.capitalship.gr](http://www.capitalship.gr)